

BOLON

MULTI-FAMILY

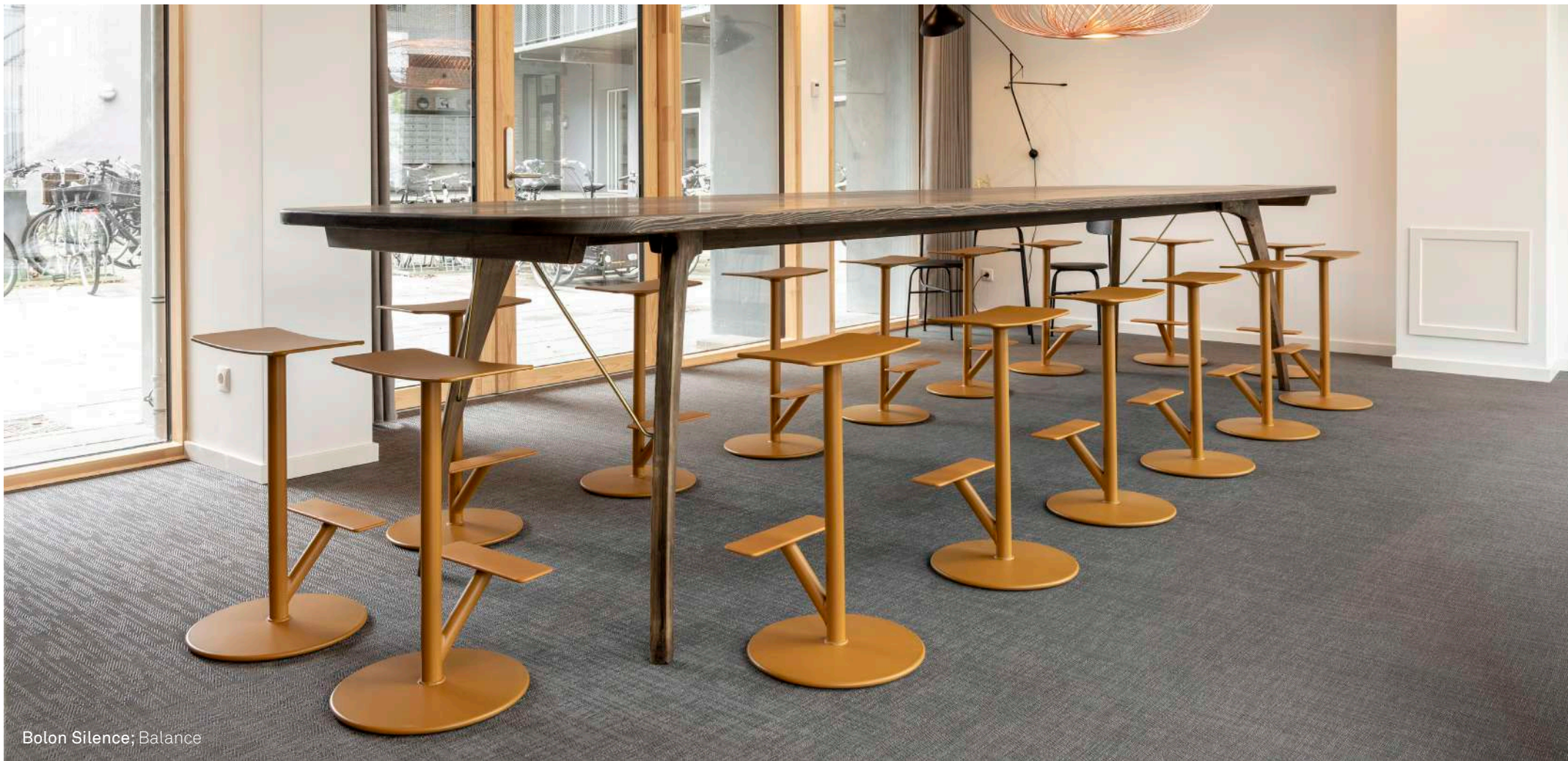
North America



Bolon Graphic; Herringbone Beige

CONTENT

4	The Story of mistudios
7	Bolon Product Overview
9	Bolon Product Highlights
10	Bolon Multi-Family
12	Living Areas
26	Interior Corridors
32	Common Spaces
42	Fitness + Wellness
50	Outdoor Areas
56	Area Rugs
71	Bolon Green®
72	Bolon Care+



Bolon Silence; Balance

THE STORY OF MISTUDIOS

The Company

mistudios (est. 2004)- mistudios curates premium design solutions for architects and interior designers. Our team draws on decades of practice as interior designers, healthy building ambassadors and construction professionals to find the ideal solution for your space.

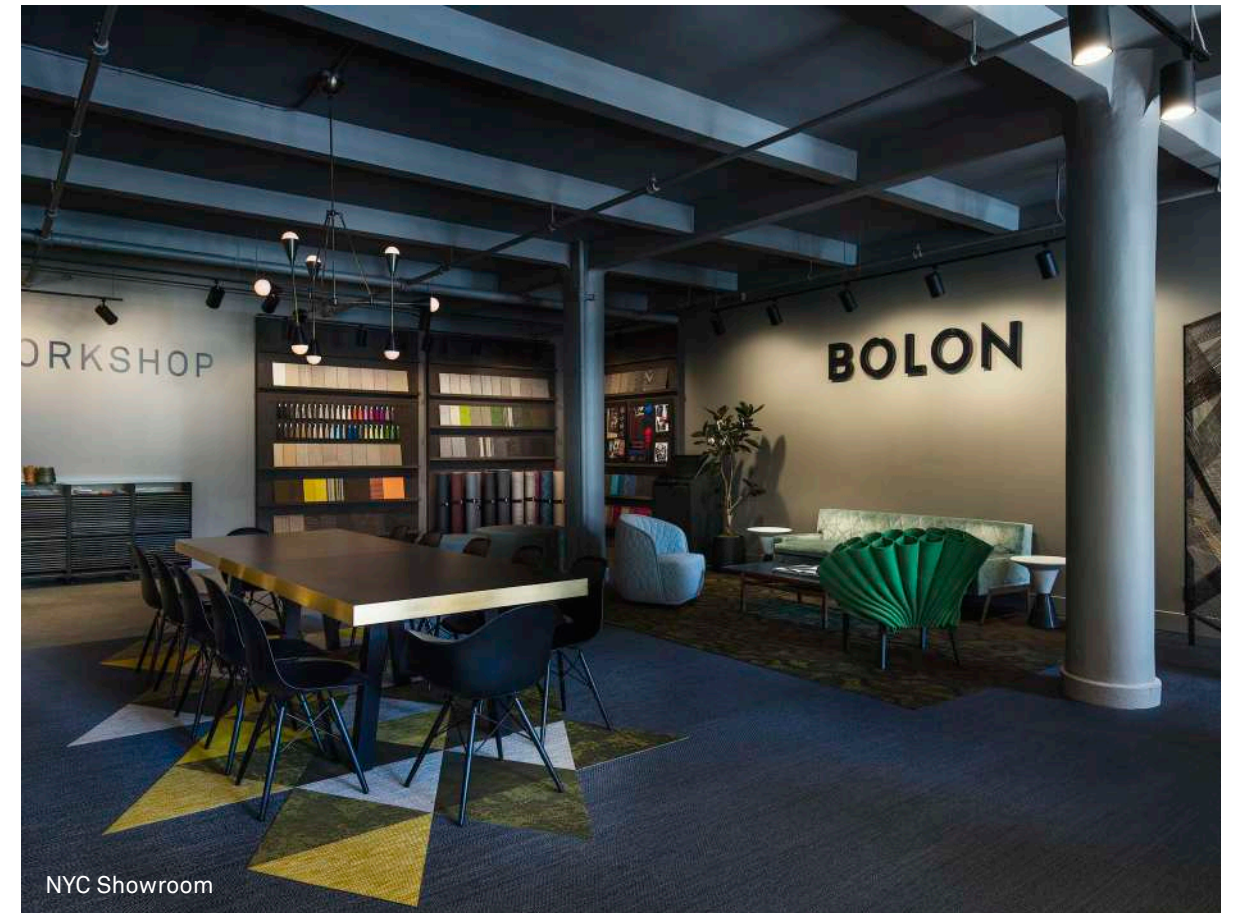
Headquarters: NYC

Showrooms: NYC and LA

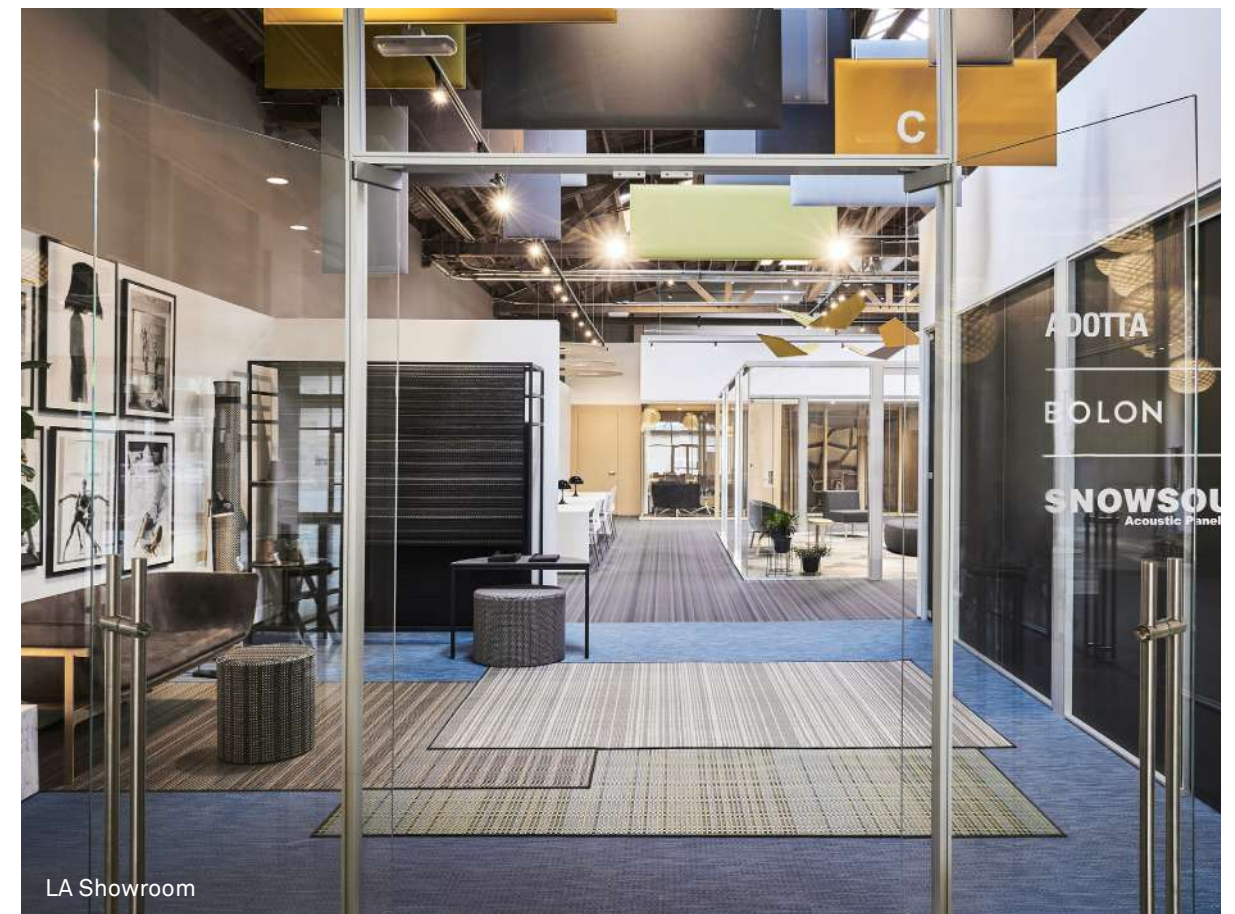
Inventory: GA

Our Partner

Bolon (est. 1949) - A women-owned and third generation family-operated Swedish design company and the creator of woven vinyl flooring. Bolon products are trend-setting with distinct focus on innovation, quality and sustainability. The designs deliver the beauty of a woven textile with the benefits of resilient flooring- long life cycles and ease of installation and maintenance. Bolon's portfolio encompasses an infinite range of design possibilities, suitable for all commercial applications, including indoor and controlled outdoor flooring, wallcoverings and area rugs.



NYC Showroom



LA Showroom

BOLON PRODUCT OVERVIEW

Durable, safe and easy to care for. Bolon woven vinyl flooring is a proven hygienic alternative to carpet and can be used in diverse multi-family environments with complete confidence.

PRODUCT STRUCTURE

Bolon material is comprised of four layers, fused together through a heating process.

1. Top Layer, Weave

A set of vinyl threads (warp and weft) that are woven together and characterized as profiled, elliptical or folded.

2. Upper Layer, Backing

Fire-protective backing (Bfl-s1 Classification).

3. Middle Layer, Backing

Glass fiber layer for dimension and stability.

4. Bottom Layer, Backing

Adjustable for rolls, tiles or acoustic needs. This layer is comprised of up to 33% recycled content.

100% MADE IN SWEDEN | 100% QUALITY

All design, production and distribution activities are based at the factory in Ulricehamn – Bolon even produces their own raw materials there. This strategy of centralization ensures expertise across the entire value chain, while encouraging flexibility and innovation. The designs deliver the beauty of a woven textile with all the benefits of resilient flooring – long life cycles and ease of installation and maintenance. As an international design brand, boasting collaborations with world-renowned architects and designers, Bolon always stays a step ahead.



BOLON PRODUCT HIGHLIGHTS

The performance behind the aesthetic.

Waterproof

The backing fused to Bolon materials is impervious to liquid, resulting in a waterproof and rot-proof product.

Non-Slip

The woven structure of Bolon flooring is naturally non-slip, making it appropriate for public areas exposed to heavy foot traffic.

Indoor / Outdoor

Bolon material is suitable for both indoor and controlled outdoor use, maintaining its color and structure when exposed to natural weather elements.

Quality Assurance

Every one of Bolon's collections are developed, designed and manufactured in Sweden, without any exceptions. This allows Bolon to control every product put to market, with a focus on quality and detail.

Sustainability

Bolon owns and operates an onsite recycling plant, implements geothermal cooling practices and produces all material free of phthalates. The material itself is 100% fully recyclable with environmental certifications including GreenTag, BREEAM, EPD, and Floorscore, which can contribute to higher LEED ratings and WELL certification.

Hypoallergenic

Bolon material is hypoallergenic with very low VOC emissions, so it contributes positively to indoor air quality.

Comfort

Bolon flooring provides comfort underfoot and has antistatic properties to protect against unpleasant shocks.

Thermal Insulation

Bolon flooring offers warmth for greater energy savings.

Wellness

Bolon materials are FloorScore certified to support healthy indoor air quality. Many Bolon flooring collections also contribute to biophilic design and natural pattern incorporation strategies.

Reflectivity

The matte or satin finishes of Bolon materials eliminate bright reflections on flooring under light sources. Bright reflections on high-gloss surfaces create the look of "wet floors" causing slips and falls among the elderly and those with dementia.



Bolon Studio™ Shape Triangle; Artisan Slate, Artisan Ivory, Botanic Cilia

BOLON MULTI-FAMILY

Functional by nature, versatile by design.

Low Maintenance

Multi-family environments with simple to maintain surfaces ensure living areas and common spaces are easy to upkeep. Bolon products feature a compact yarn and weaving structure with no exposed fibers, resulting in fewer places for dirt and debris to hide and easy cleaning requirements.

Durability

Multi-family flooring must be hard wearing enough to withstand years of everyday wear and tear from tenants. Bolon is both durable and resilient, suitable for heavy commercial traffic and offers a 10 to 15 year warranty on its material when maintained according to Bolon Care+ guidelines.

Design Versatility

The Bolon product portfolio includes over 80 styles, available in a variety of textures, colors, patterns and formats, including rolls, tiles and Studio™ Shapes. In addition to the limitless aesthetic options offered in the standard product line, Bolon offers designer collections and bespoke programs, designed to meet specific project and application demands.

Our portfolio includes projects in the following multi-family areas, among others:

- Living Areas
- Corridors
- Common Spaces
- Fitness Centers
- Outdoor Spaces
- Area Rugs



Bolon Graphic; Herringbone Beige



LIVING AREAS

Bolon Silence; Pulse



LIVING AREAS

Living areas need to be functional and hard wearing without compromising the warmth and comfort of home. Bolon flooring provides the perfect blend of function and form, ensuring that the design does not need to sacrifice one for the other. The collection offers comfort underfoot, the design versatility traditionally only found in carpet and the durability of resilient floorcoverings.

Acoustics

Sound can have adverse effects on the human body such as sleeping disorders, stress and headaches. Proper acoustic planning in multi-family environments is crucial to ensuring comfort. Bolon offers flooring with acoustic felt backing, with a 21-22 dB Impact Sound Insulation level and a 60+ Impact Isolation Class (IIC) rating.

Hygiene and Maintenance

Carpet harbors allergens such as dust mites, mold and dander. Bolon woven vinyl flooring is impervious to liquid with an easy to clean compact woven structure and no exposed fibers. Bolon material is hypoallergenic making it asthma and allergy-friendly and offers antimicrobial properties to fight bacteria and ensure optimal sanitary conditions.



Bolon Graphic; Checked





Bolon Now; Silver





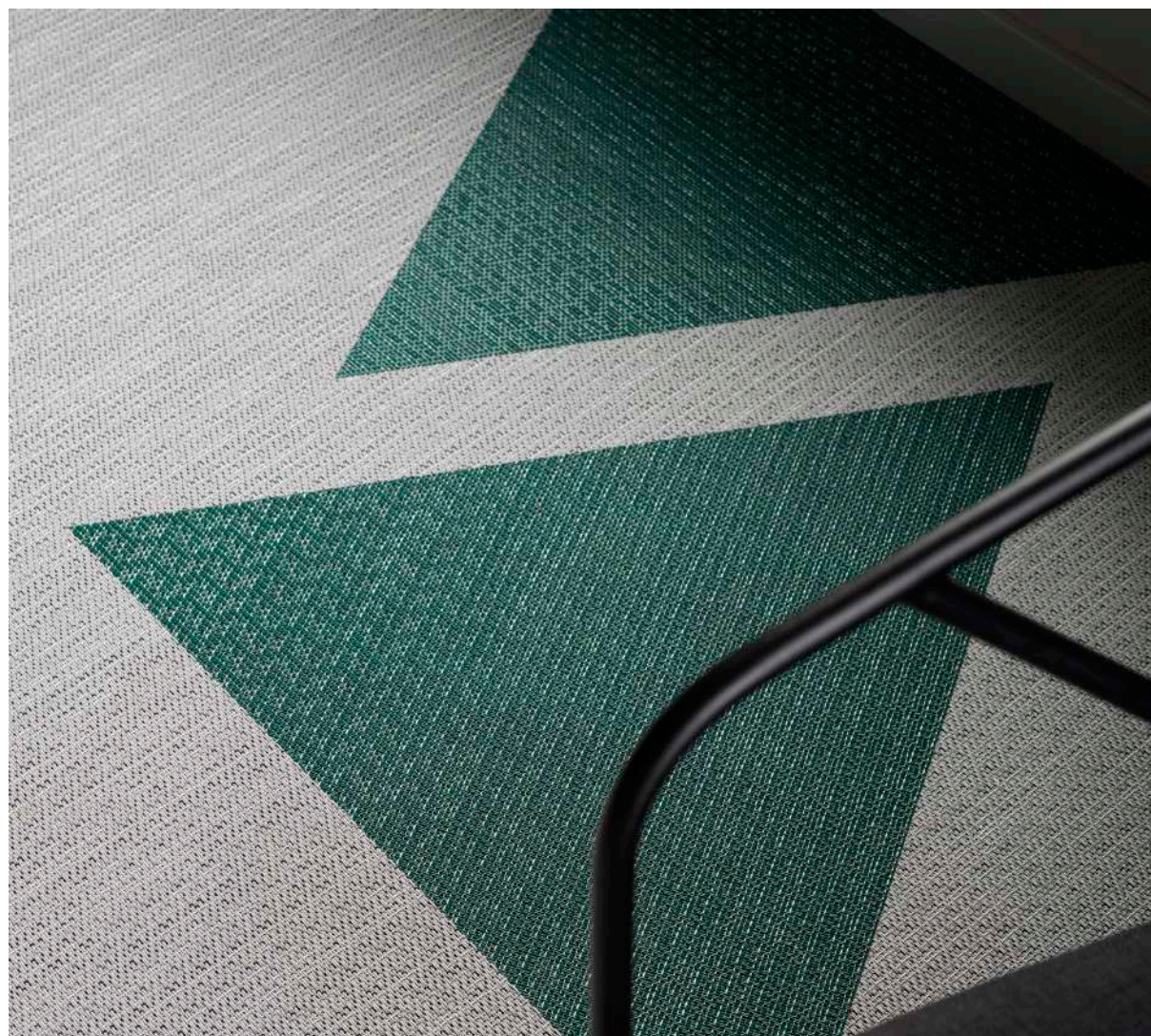
Bolon Silence; Pulse



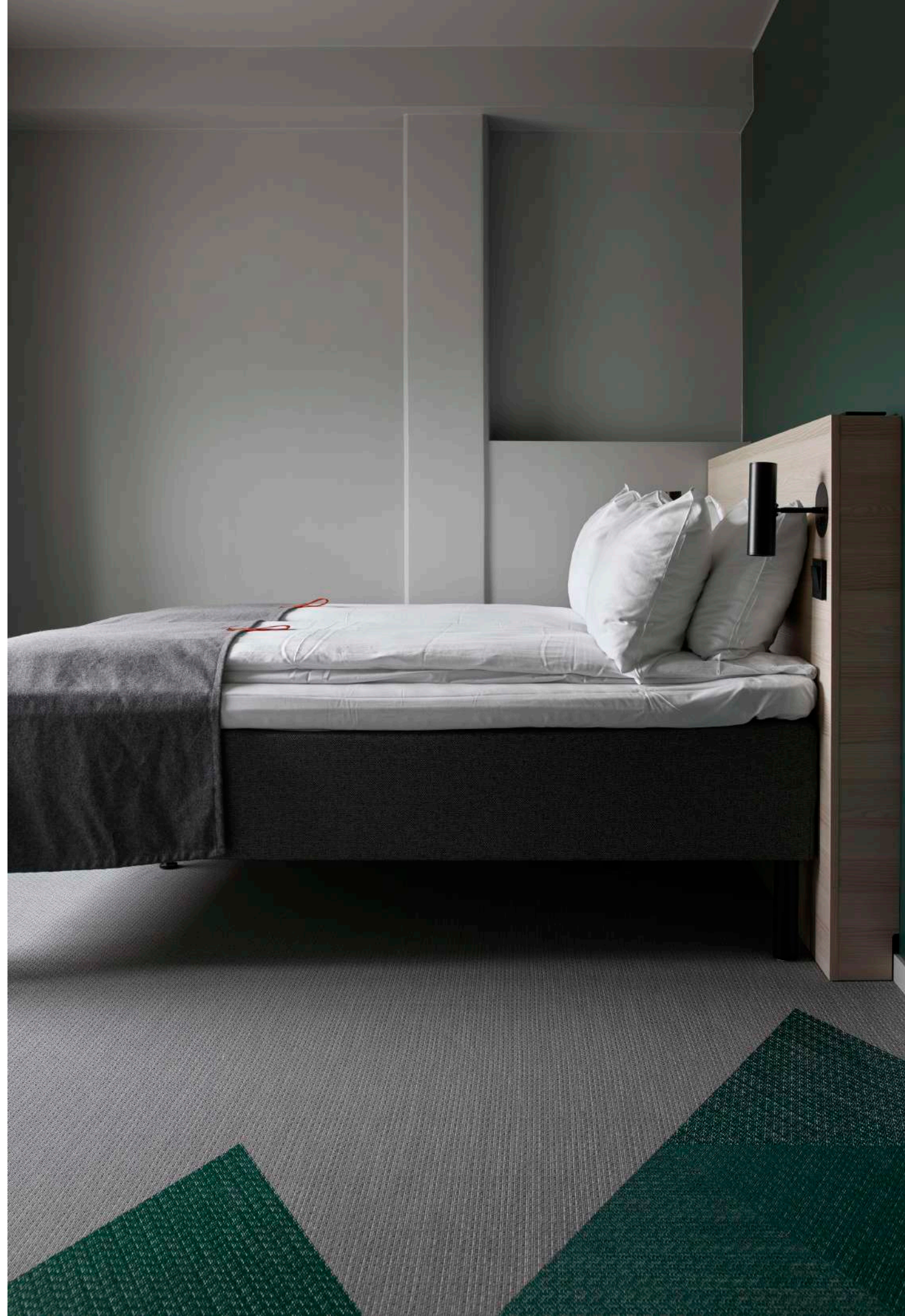


Bolon; Artisan Quartz, Artisan Slate, Botanic Sage





Bolon; Artisan Slate, Studio™ Shape Triangle: Artisan Jade



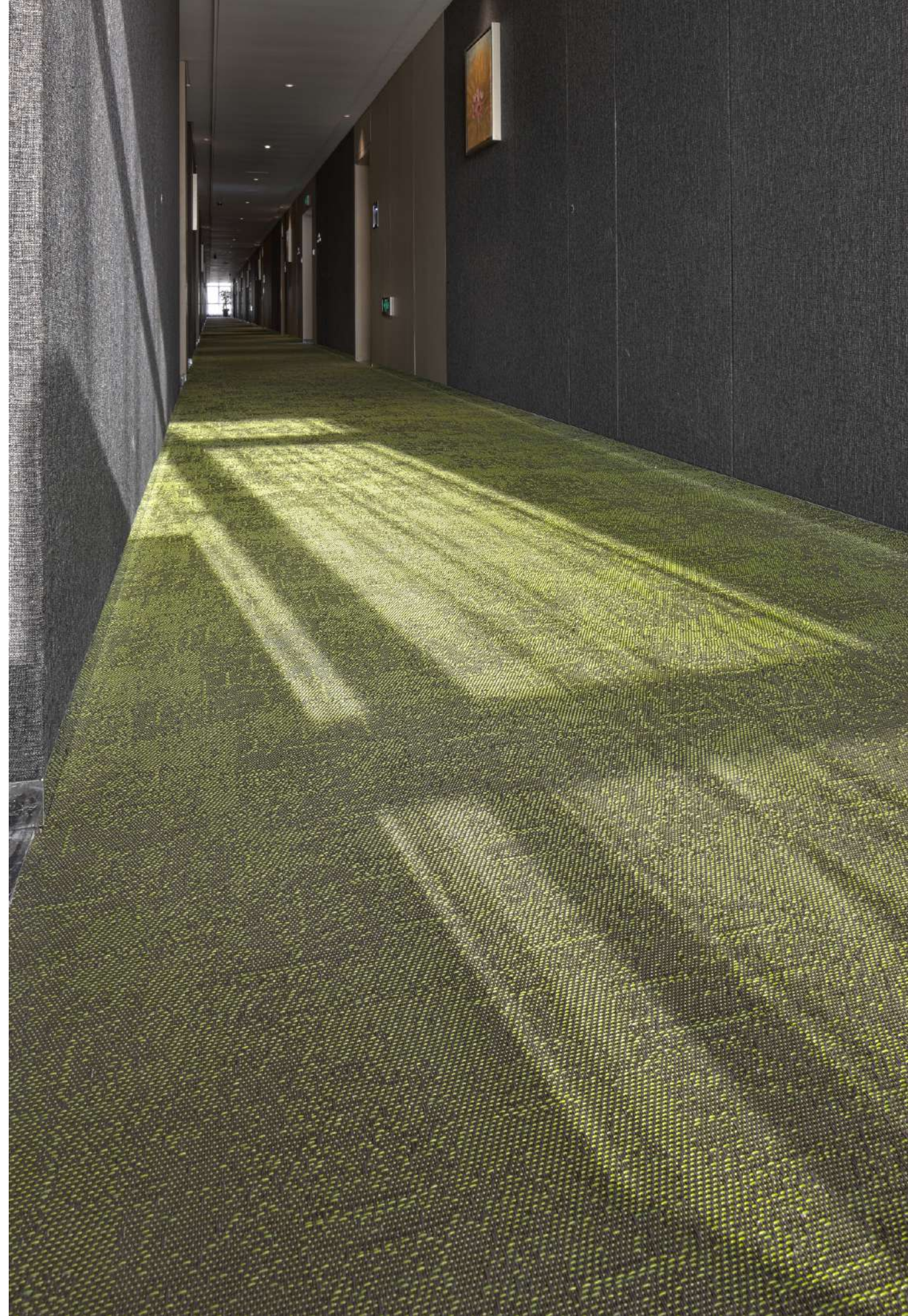


INTERIOR CORRIDORS

Bolon BKB; Sisal Plain Mole

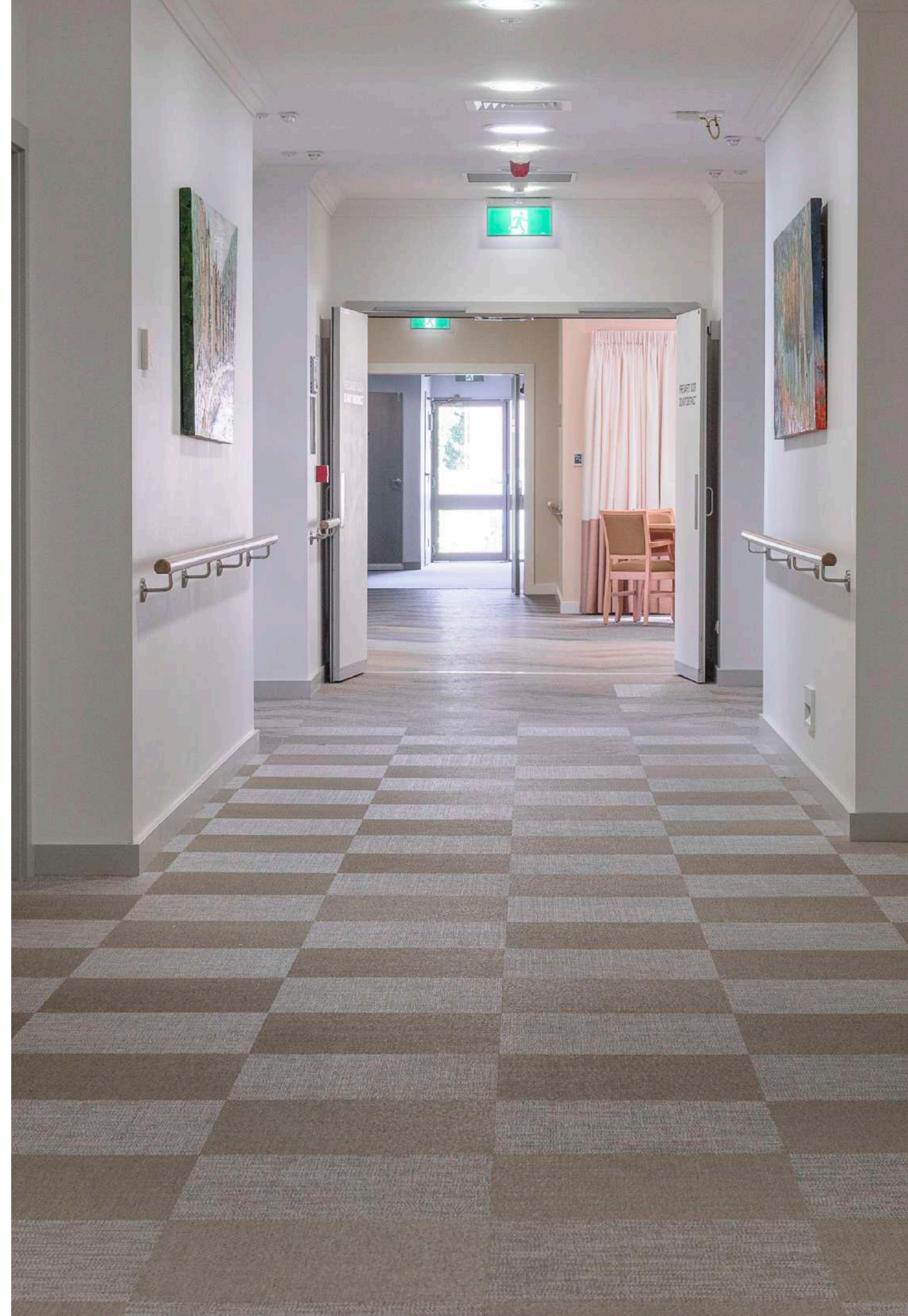


Bolon; Left: Studio™ Shape Triangle; Botanic Osier, Botanic Viva, Artisan Coal | Right: Create Converso





Bolon Botanic Tiles; Cilia





COMMON SPACES

Bolon Studio™ Shape Triangle; Artisan-Malachite, Botanic Thyme, Botanic Osier



Bolon; Left: Bolon By You Weave | Right: BKB Sisal Plain Steel





Bolon; Left: Studio™ Shape Triangle; Artisan Ecrú, Artisan Petroleum, Artisan Slate, Botanic Viva
Right: Now Silver





Bolon by You; Stripe





Bolon; Left: Studio™ Shape Wing; Artisan Coal, BKB Sisal Plain Black, Artisan Ivory | Right: Studio™ Shape Scale Artisan Quartz, Artisan Ecu, Now Copper





FITNESS+ WELLNESS

Bolon Studio™ Shape Wing; Artisan Coal, Ecru, Ivory, Malachite



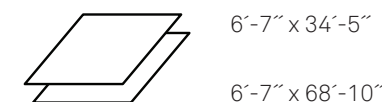
FITNESS AREAS

Bolon is approved for use with rubber-coated dumbbells up to 50 lb.

Bolon is not recommended for use in fitness areas where heavy weights will be impacting the floor frequently.

A Quiet Cushion underlayment, for additional shock and sound absorption, is recommended for all fitness area applications. Bolon can be installed over Quiet Cushion, and due to matching thicknesses, abutted without the need for transitions or seaming. Quiet Cushion is suitable with Bolon under various types of fitness equipment, including treadmills, elliptical machines, weight machines and light dumbbell use.

QUIET CUSHION 4MM size (roll):

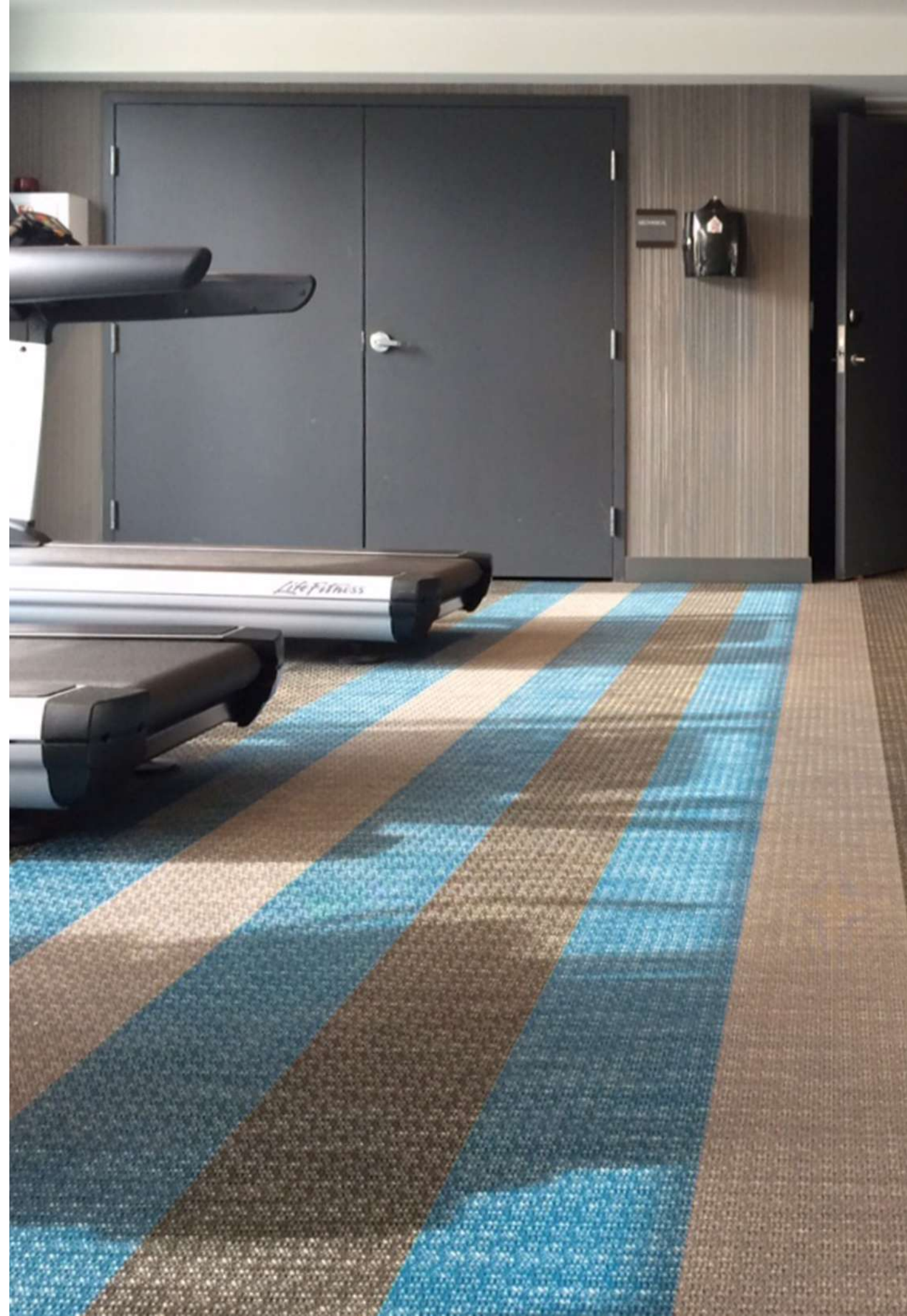


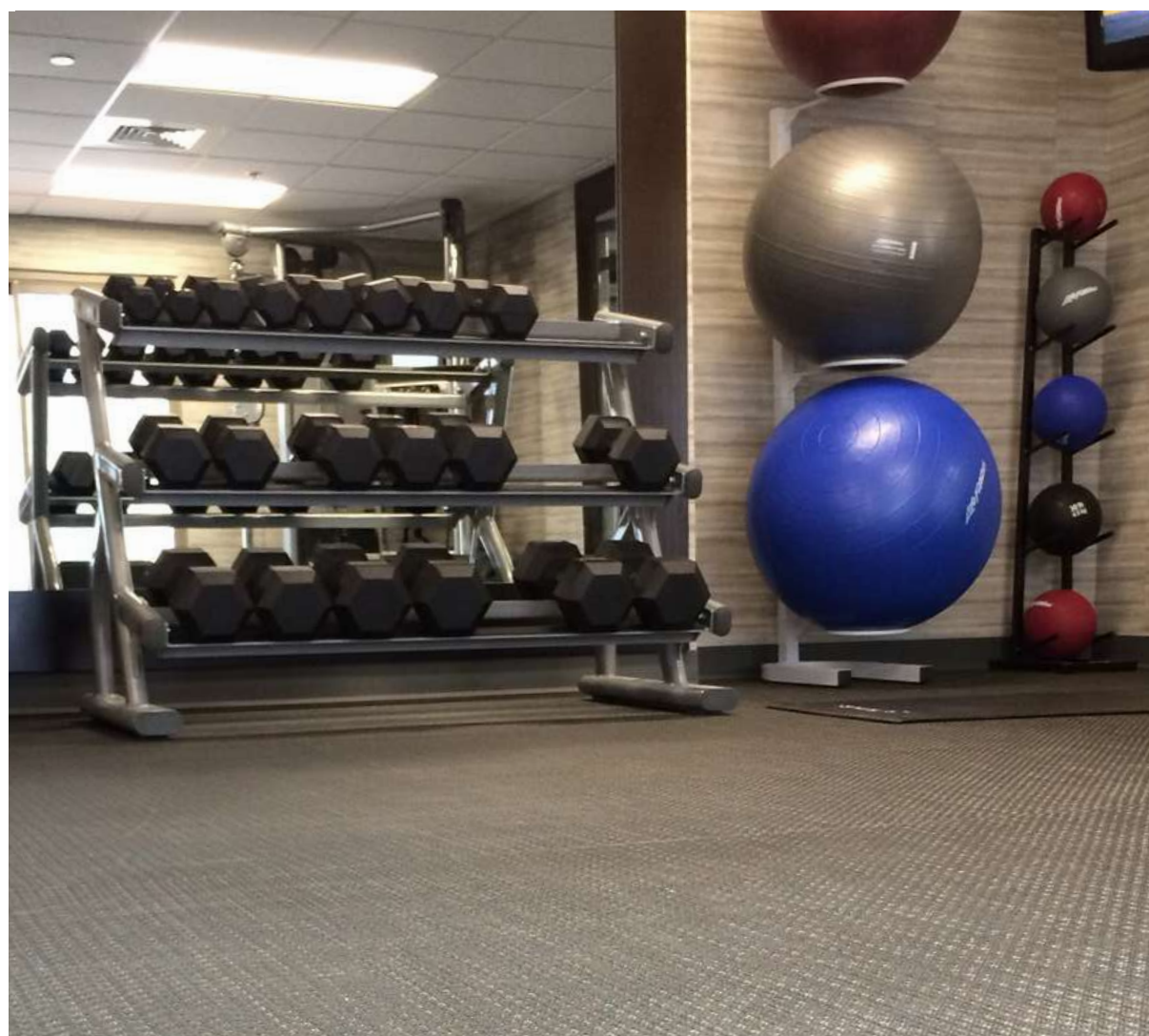
Product Description: PVC underlayment for sound absorption and additional cushion. Sold in half roll or full roll sizes.

* See *Quiet Cushion Product Sheet*

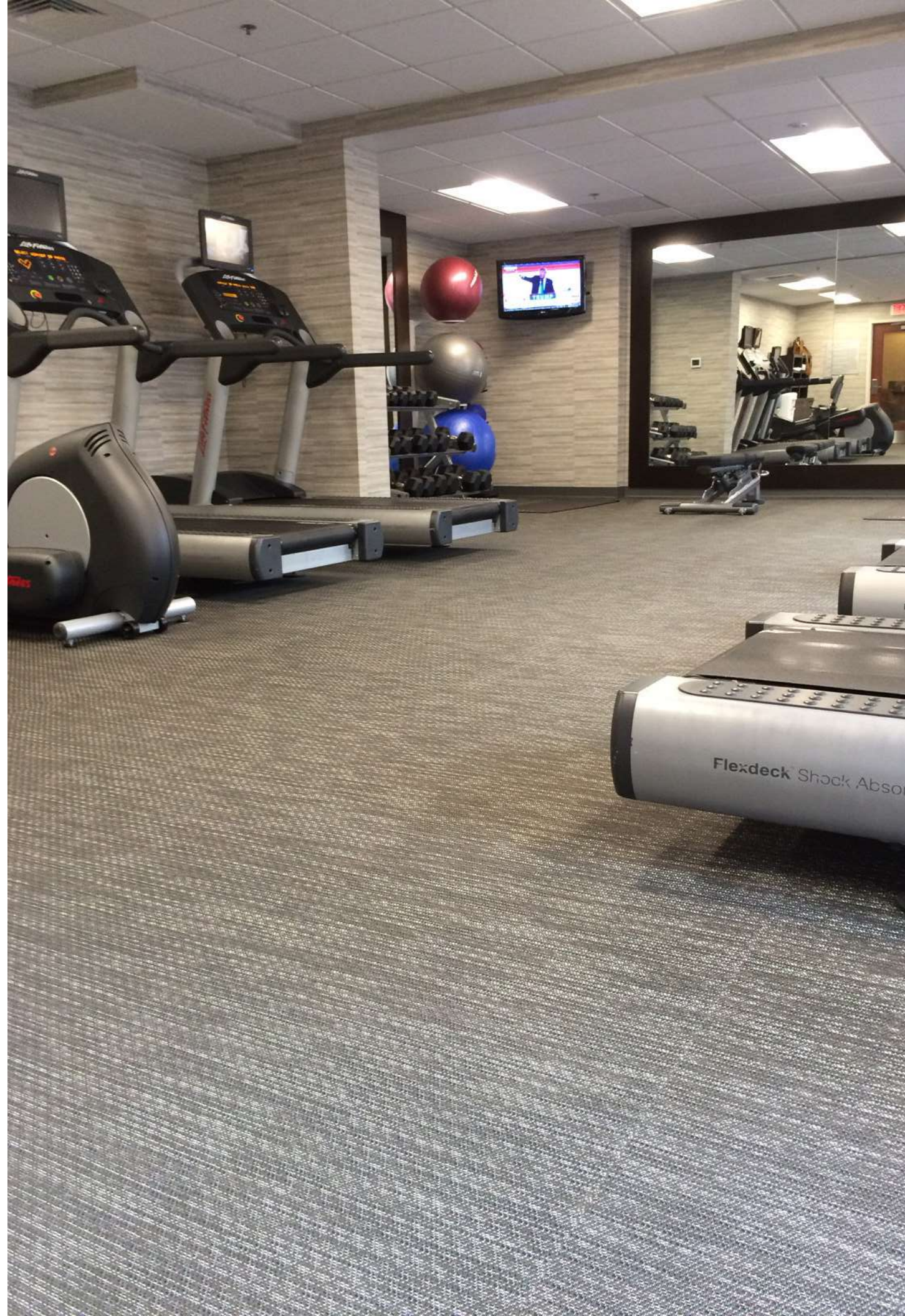


Bolon Artisan; Denim, Ecrú, and Concrete





Bolon Artisan; Coal





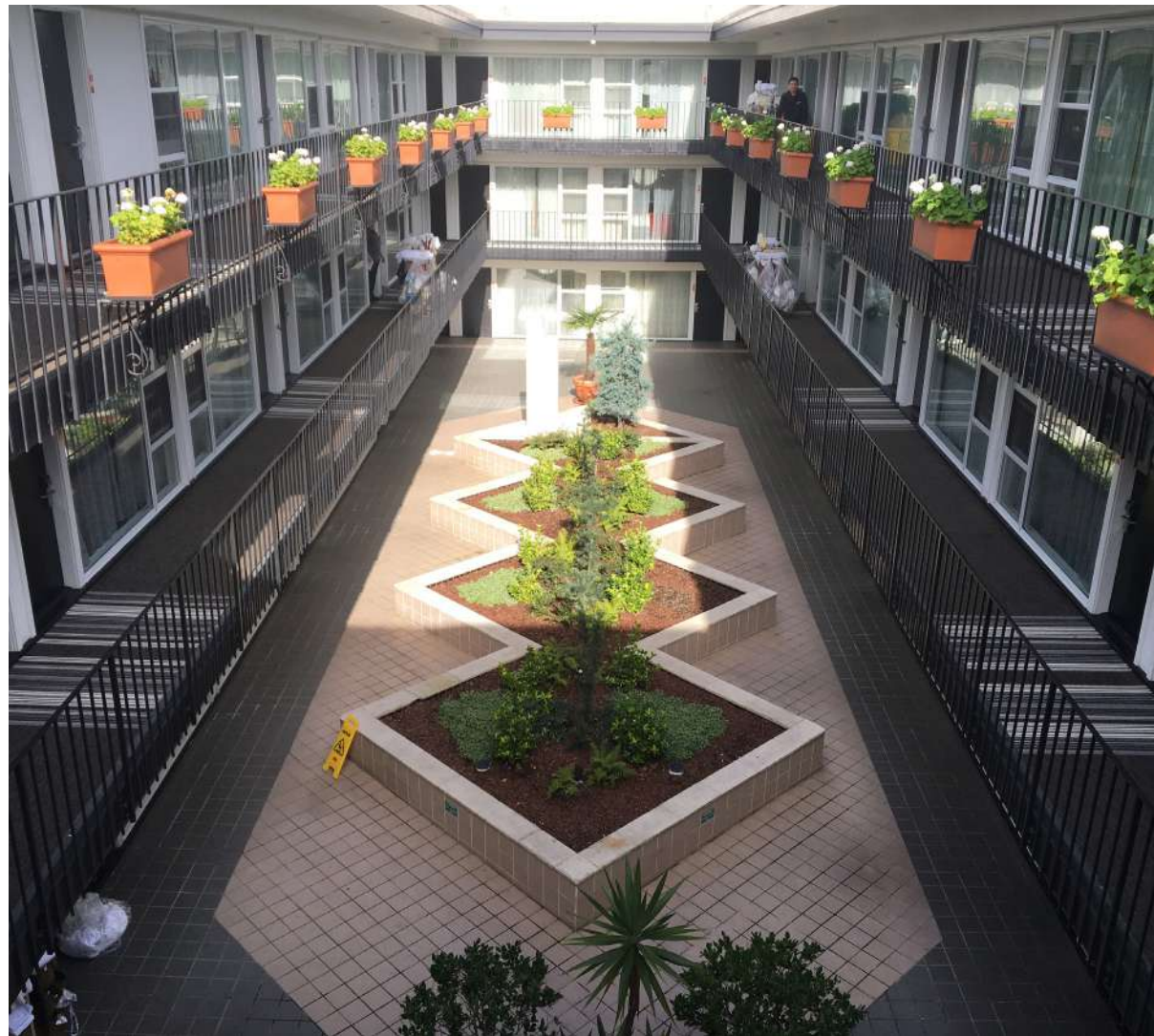
OUTDOOR AREAS

Bolon Float- Studio™ Shape Hexagon; Botanic Cilia, Botanic Viola, Now Brass

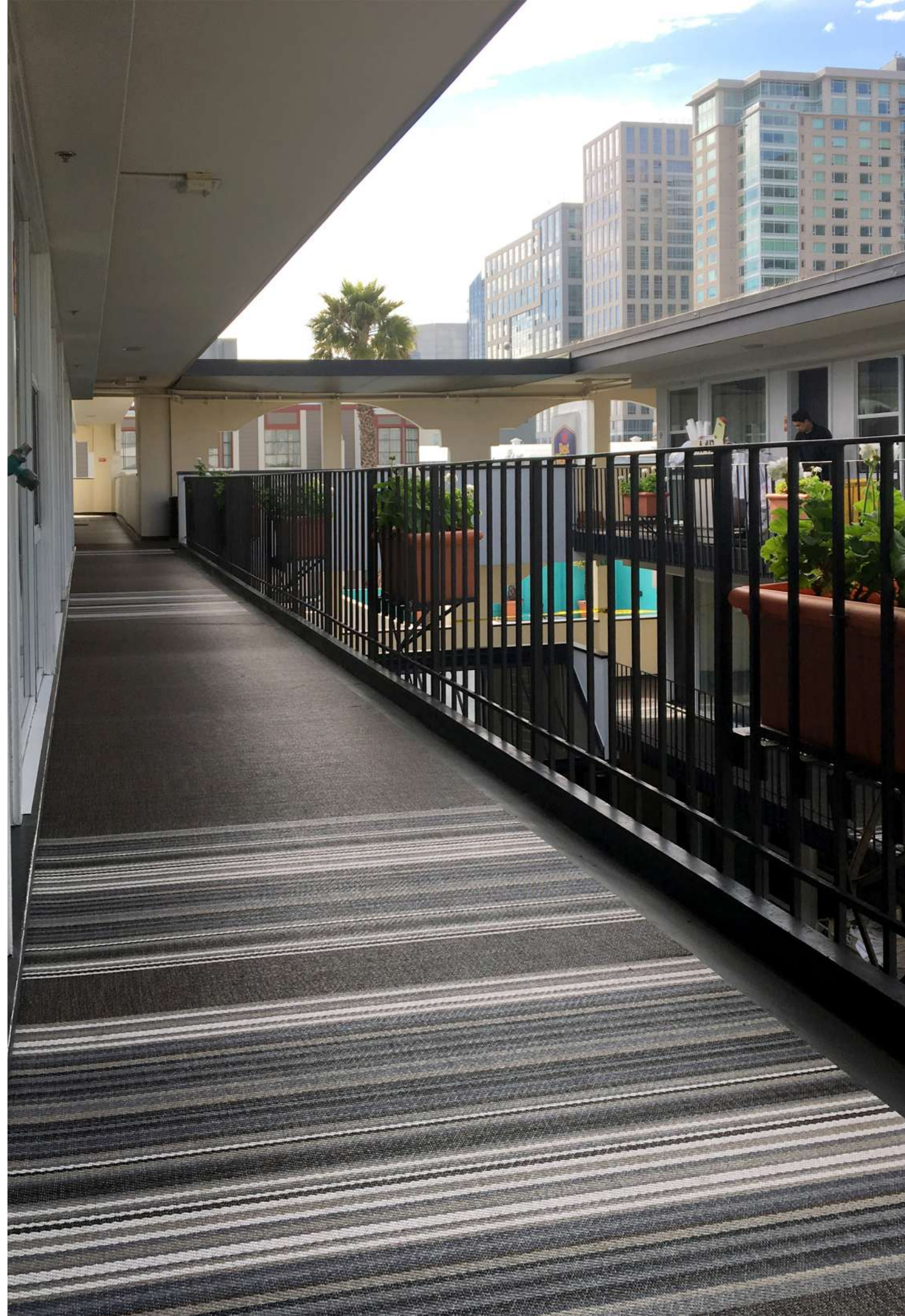


Bolon Float; Left: Missoni Optical Turquoise | Right: Bespoke Flow





Bolon Botanic; Tilia and Garden





AREA RUGS

Bolon Float - Studio™ Raw Edge; Studio™ Shape Wing; Silence Sense; Silence Balance

AREA RUGS

Bolon Float - our bespoke area rug program - offers multi-family designers the freedom to specify flooring that is unique to each project, without the burden of complicated installation requirements.

In addition, state-of-the-art cutting machines offer the flexibility to create shaped area rugs to fit seamlessly around cabinetry and furniture without the requirement of labor or disruptive renovation time.

Bolon area rugs rest effortlessly and on a variety of surfaces.

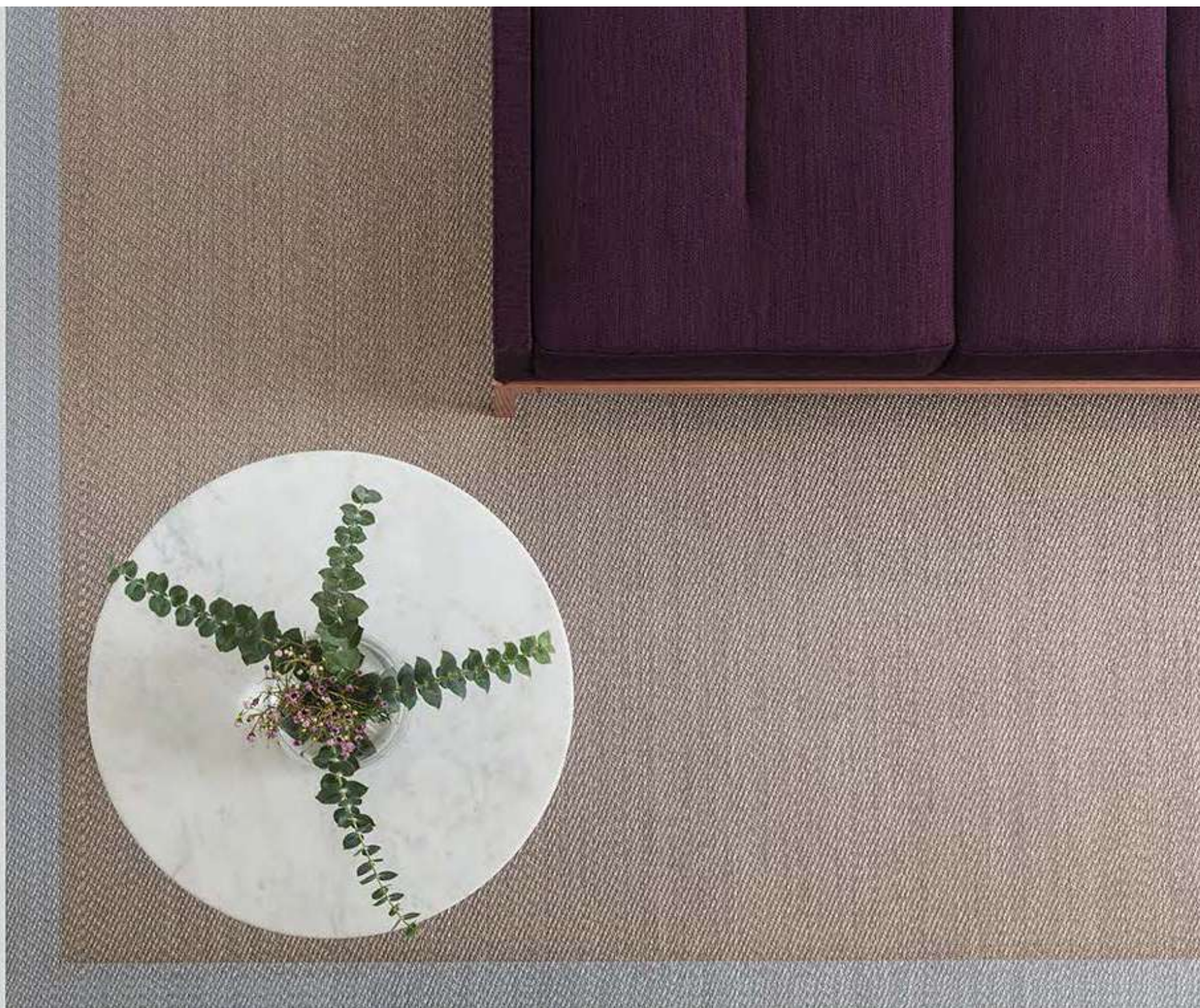
In other words, Bolon flooring floats.

The program consists of five categories:

- Bespoke
- Bespoke Border
- Studio™ Straight Edge
- Studio™ Raw Edge
- Custom

Important Information:

- Largest recommended size: 18' x 30'
- Bespoke and Bespoke Border area rugs are fabricated with a self-bound edge.
- Studio™ Straight Edge and Studio™ Raw Edge area rugs are fabricated with an underlayment, 1.4mm thick.
- An underlayment of 4mm thickness is available for additional cushion and comfort underfoot.
- Anti-slip backing is available for smaller area rugs.
- Round and oval-shaped area rugs are considered custom products, requiring a detailed seaming process.



Bolon Float - Bespoke Border; Now Champagne, Now Silver



Bolon Float - Bespoke; Create Facio





Bolon Float - Bespoke Border; Now Champagne, Now Silver





Bolon Float - Studio™ Straight Edge; Studio™ Shape Deco; BKB Sisal Plain Mole, BKB Sisal Plain Sand, Ethnic Kaise, Now Silver



Bolon Float - Studio™ Straight Edge; Studio™ Shape Deco; BKB Sisal Plain Mole, BKB Sisal Plain Sand, Ethnic Kaise, Now Silver





Bolon Float - Studio™ Raw Edge; Studio™ Shape Wing; Silence Sense, Silence Balance





Bolon Recycling Plant

BOLON GREEN®

Bolon operates its own onsite recycling plant, enabling them to create recycled material from waste and use the recycled content in their products. This investment is the latest in a long line of proactive steps designed to reduce the environmental impact of Bolon products and manufacturing processes.

- ✓ **Bolon is committed to producing eco-friendly products through:**
 1. Exceeding legislative demands
 2. Utilizing renewable energy in production processes
 3. Purchasing practices
 4. Eliminating the use of hazardous substances from materials
 5. Product recycling
 6. Recovering energy from non-recyclable products
 7. Anticipating future legislation
 8. Ensuring environmental control processes fulfill international standards with ISO 14001 certification
- ✓ **100% made in Sweden**
Along with the obvious environmental benefits in terms of transport and logistics, this allows Bolon to have full control over production processes.
- ✓ **No added phthalates**
On their own initiative, and after a long consultation process with industry experts, Bolon phased out the use of phthalates from all of their collections.
- ✓ **High-quality raw materials**
Bolon only sources and uses modern, safe, high-quality PVC – without exception.
- ✓ **Waste and spill monitoring**
Bolon consistently monitors waste and spill performance and is mindful of water and energy consumption.
- ✓ **Eco-friendly maintenance**
Bolon products can be cared for with eco-friendly, neutral cleaning agents and hold current product and process certifications.
- ✓ **Geothermal cooling**
Bolon only uses locally drawn groundwater for cooling purposes. The entire factory, warehouse, offices and every machine they contain are water-cooled.
- ✓ **Advanced filter system**
The backing process Bolon flooring goes through produces fumes. To manage this, they have installed a filter cleaning system that removes 98% of fumes.

Bolon product and process certifications include:

mindfulMATERIALS, Floorscore, BREEAM, Health Product Declaration (HPD), Environmental Product Declaration (EPD), Green Tag, M1, Basta, Portico and more.



Bolon North America | mistudios is registered with The American Institute of Architects Continuing Education System (AIA/CES) as a course provider. Credit designation: 1.0 LU | HSW. Course number: BLN0118. Course Name: Woven Vinyl Flooring Uncovered; Production, Life Cycle Assessment and Sustainability.

To schedule a CEU Presentation, contact your mistudios Representative.

BOLON CARE+

Manual Cleaning and Stain Removal

Regular Cleaning

- Daily Cleaning can be done with a vacuum.
- For daily wet cleaning, use a scrub brush and warm water, and follow with a soft microfiber cloth for drying.
- Periodic cleaning can be carried out with a scrub brush, warm water and an all-purpose pH 7-8.5 cleaner, followed by a wet vacuum or by drying with a soft microfiber cloth.

Mechanical Cleaning

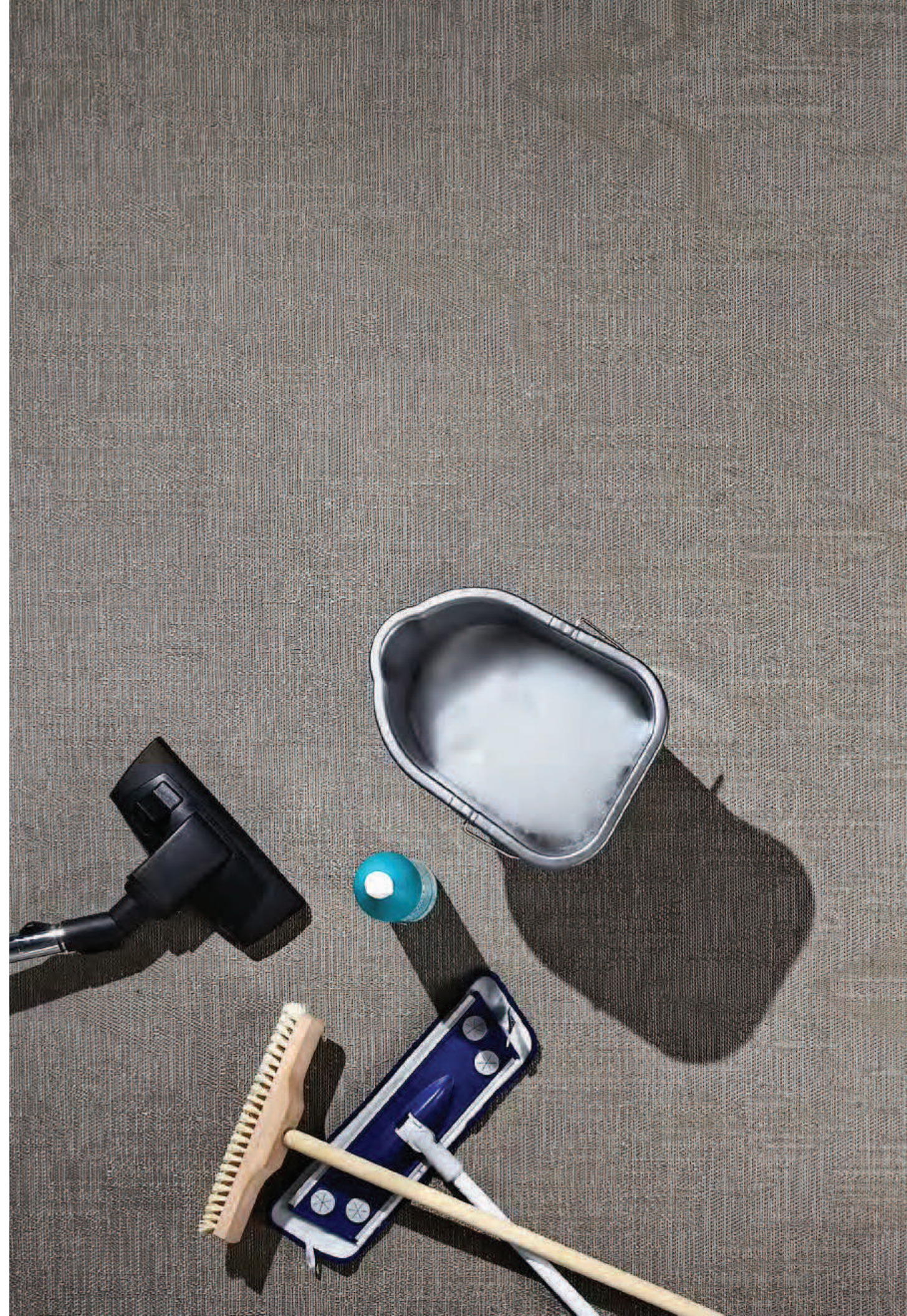
- **Roller Brush Method:** Use a scrubber-dryer with soft brush rollers, warm water and a strong alkaline, all-purpose cleaner with pH of 9-11. Start by wetting the floor by running the machine with the brushes and water/heavy duty cleaner solution. Do not use the suction function.
- **Orbot Machine Method:** Use an Orbot machine with soft “Super Zorb” pads and warm water. Use a minimal amount of an all-purpose cleaner with a pH of 7-8.5 on more heavily soiled areas. Run the machine slowly backwards and forwards with uniform overlapping while “spray-dampening” the floor. The dirt is absorbed in the pad.

Stain Removal

- Use a scrub brush and rinse with water.
- When using a stain remover, please check that it is safe for use on vinyl flooring.

Disinfecting

- Do not use acetone.
- Use Alcohol (ASTM F925) or Bleach diluted with water at a 1:10 ratio (1 part Bleach, to 10 parts water)
- Always be sure to rinse after disinfectant use with clean water.
- Please consult your Bolon Representative with additional questions.



mistudios

North American Partner
27 West 24th St, Suite 601
New York, NY 10010
+1 212 252 2049
info@mi-studios.com